

Child & Family Services

Performance Report

V1

September 2018



Welcome

As the leaves begin to fall off the trees and the nights begin to close in, the summer is well and truly past us. There are still some rays of sunshine however, to be found in this month's performance report.

I'm expressly grateful to you for all of the hard work that has gone in to raising the game with your recording of visits to looked after children and children on the child protection register. This day to day work is the butter to our bread and getting it onto our recording system as soon as possible provides better safety for the children and their families as well as you - the named worker on that case. This work demonstrates that we are compliant in delivering our legal requirements under the Social Services and Wellbeing Act so it's in everyone's interest that this work continues to get recorded and we try to get even more visits recorded within the three day deadline.

Scattered amongst our sunshine there are however a few grey clouds. Our LAC population has continued to rise over the last month, albeit slower than in previous months. This is an area of our work that we have no choice but monitor more closely. Safeguarding a child from abuse and neglect will always be necessary, but following the success of our original Safe LAC Reduction Strategy, we will now push on with the next steps of our improvement programme that seek to fully embed the changes we have made in recent months, improve our local infrastructure to include better links to early intervention and prevention services and furnish you with the tools you need to deliver the positive outcomes for children and families that will mitigate the need to resort to care wherever we are able to.

*****STOP PRESS*****

I'm very pleased to announce that our Inspection Report has been published by Care Inspectorate Wales. In it they say:

"We found good quality practice in Swansea children's services, with positive outcomes being achieved for many children and young people.

Staff were dedicated, resilient, and valued the support and accessibility of their managers."

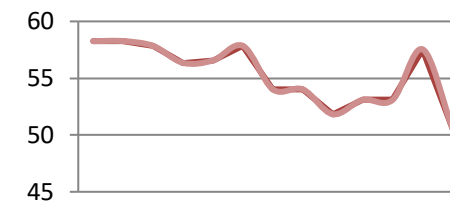
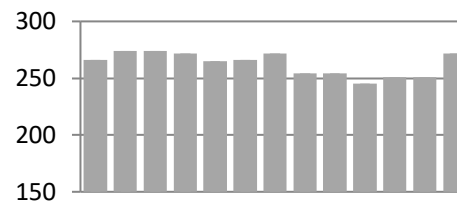
Well done you!

**Julie Thomas – Head of Service
October 2018**

Our Headline Performance this Month

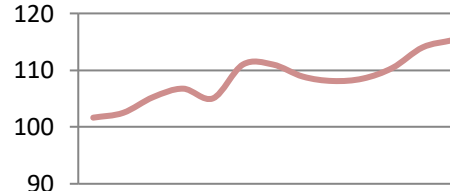
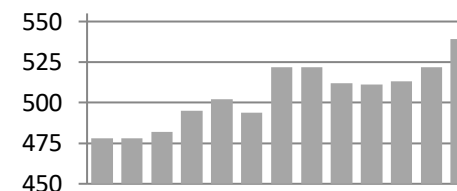
Child Protection

There are **239** (272) children on the children protection register. This is a **decrease of 33** from last month giving us a rate of **51** Per 10,000.



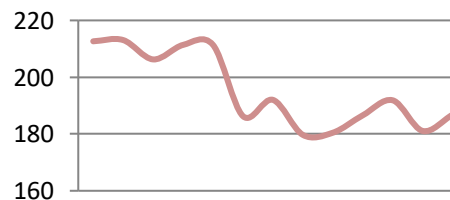
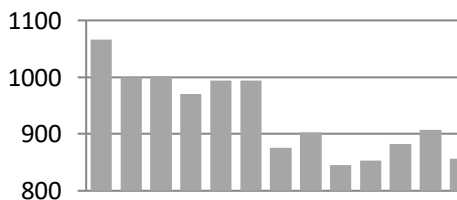
Looked After Children

There are **545** (539) looked after. This is an **increase of 6** from last month giving us a rate of **115** Per 10,000.



Children in Need of Care and Support

There are **883** (856) children in need of care and support. This is an **increase of 27** from last month giving us a rate of **187** Per 10,000.



Wellbeing

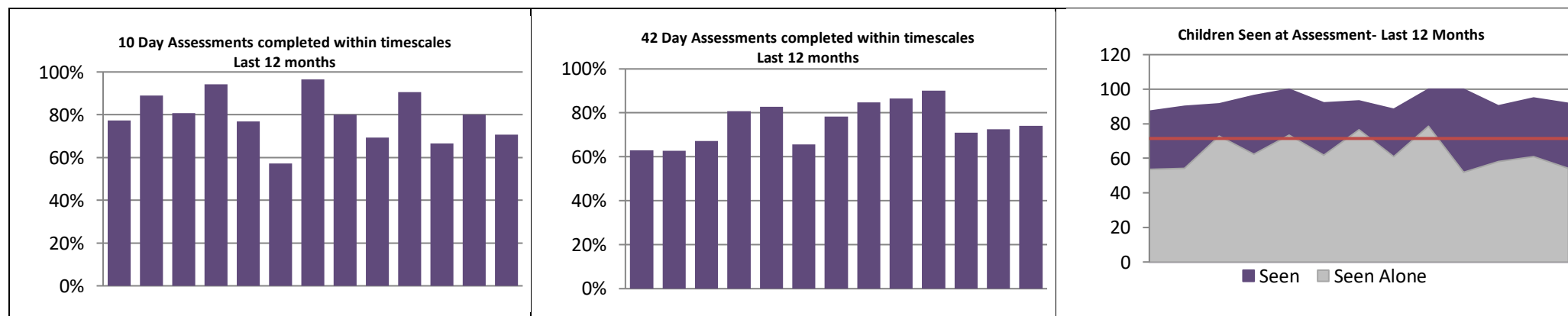
Measure / Metric	Result	Target	What's Good?	Status
The number of instances of Information, Advice or Assistance given by the IAA service in the month:	868 (816)		Low is Good	
The percentage of these contacts that were helped by providing information only:	39.40% (40.69%)		High is Good	
The percentage of these contacts that were diverted to other services:			High is Good	
The percentage of these contacts that were passed on for formal assessment:	12.33% (13.11%)		Low is Good	
The number of repeat referrals in the month:	9, 8.41% (32, 29.91)	Less than 15%	Low is Good	



What is working well?	What are we worried about?	What do we need to do?
<ol style="list-style-type: none"> Repeat referrals back within expected levels of performance. Low numbers of children passed through our front door for formal assessment. 		<ol style="list-style-type: none"> Include information on cases diverted to other services.

Supported Care Planning - Assessments

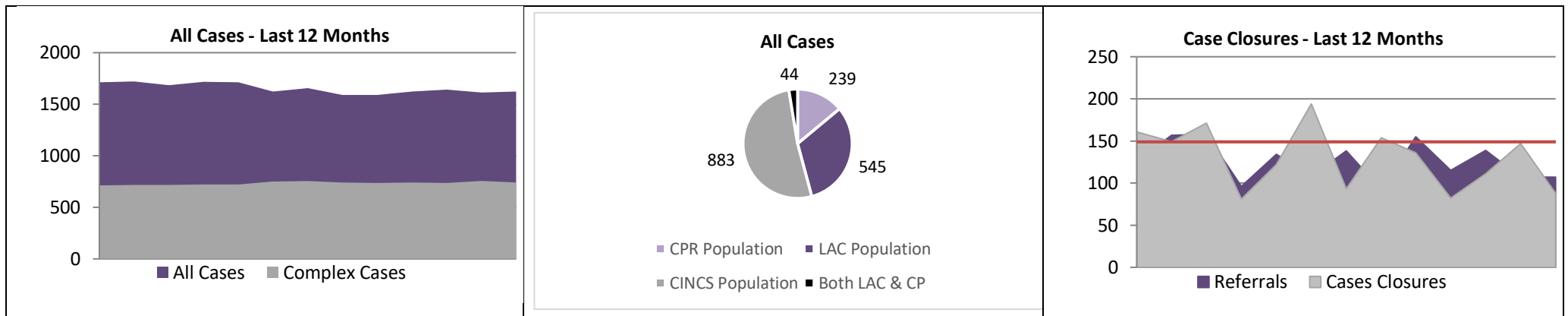
Measure / Metric	Result	Target	What's Good?	Status
Number of 10 day Assessments Carried out during the month:	17 (30)		Lower is Better	
The percentage of 10 day assessments carried out within timescales :	70.59% (80.00%)	93%	High is Good	
Number of 42 day Assessments Carried out during the month:	61 (91)		Lower is Better	
The percentage of 42 day assessments carried out within timescales :	73.77% (72.53%)	90%	High is Good	
The percentage of Assessments where there is evidence the child has been seen by a qualified worker :	91.89% (94.92%)	More than 90%	High is Good	
The percentage of Assessments where there is evidence the child has been seen alone by a qualified worker :	54.05% (61.02%)	More than 45%	High is Good	



What is working well?	What are we worried about?	What do we need to do?
<ol style="list-style-type: none"> The number of children seen at assessment continues to surpass target. 	<ol style="list-style-type: none"> Our assessment performance has fallen back to the low seventies. 	<ol style="list-style-type: none"> Undertake further analysis of assessments undertaken to establish whether the 10 day soft target should be supplanted by a graduated timescale.

Supported Care Planning – Planning, Reviews and Caseloads

Measure / Metric	Result	Target	What's Good?	Status
Number of Cases of Children needing Care and Support Managed by the Service at the end of the month:	1623 (1612)		Lower is Better	
Of these, the percentage that represent complex cases (LAC, CP):	45.59% (46.90%)		Higher is Better	
The number of cases closed to Child and Family Services during the month:	88 (147)		Higher is Better	
The percentage of reviews of Children in Need of Care and Support held during the month within prescribed timescales :			High is Good	
The percentage of CINCS allocated to a qualified worker at the end of the month:	78.82% (78.62%)		High is Good	



What is working well?	What are we worried about?	What do we need to do?
<ol style="list-style-type: none"> We are still managing to remain within range of our desired 1,600 overall population target despite the many pressures on the service. 	<ol style="list-style-type: none"> Fewer case closures in September. 	<ol style="list-style-type: none"> Continue to reduce the number of children who require care and support through better exploitation of early intervention and prevention services.

Supported Care Planning – Children with a Disability

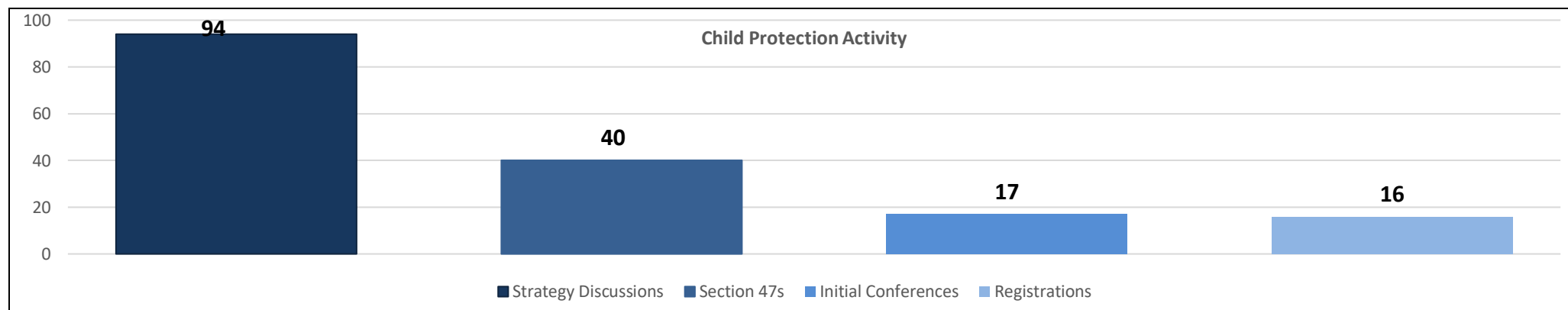
Measure / Metric	Result	Target	What's Good?	Status
The number of disabled children referred to the Child Disability Team during the month:	5 (1)		Range	
The total number of disabled children with a Care and Support Plan at the end of the Month:			Range	
The number of disabled children provided with Direct Payments at the end of the month:			Range	
The number of disabled children transitioning to the Care of Adult Services during the month:			Baseline	
The number of disabled children provided with respite care at the end of the Month:			Range	

<p>Proportion of Referrals that are CDT - Last 12 Months</p> <p>Legend: ■ Total Referrals ■ CDT Referrals</p>	<h2>Disabled Children by Team</h2>	<p>CDT Cases</p> <p>Legend: ■ CINCS ■ CP ONLY ■ LAC ONLY ■ LAC & CP</p>
---	------------------------------------	---

What is working well?	What are we worried about?	What do we need to do?

Safeguarding – Child Protection Activity

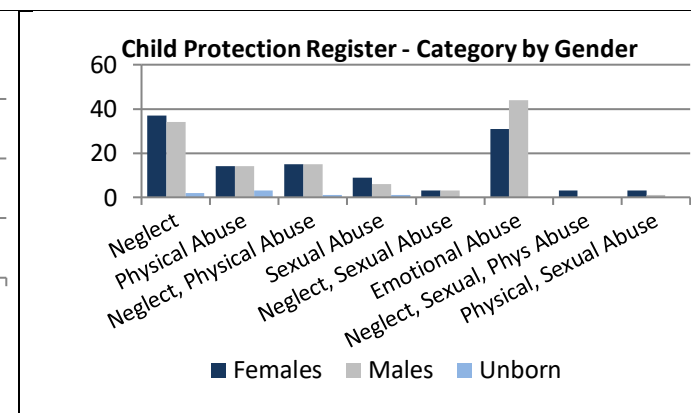
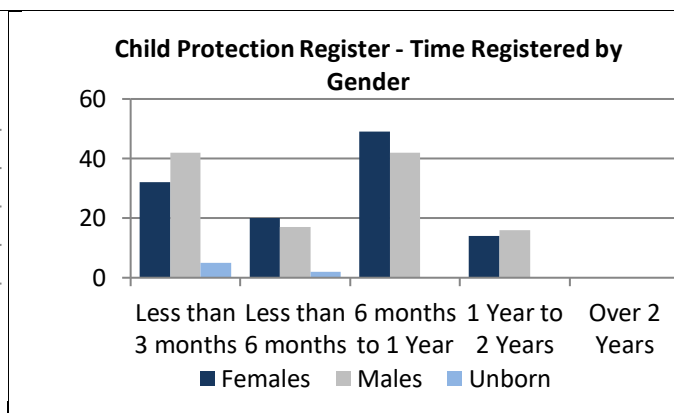
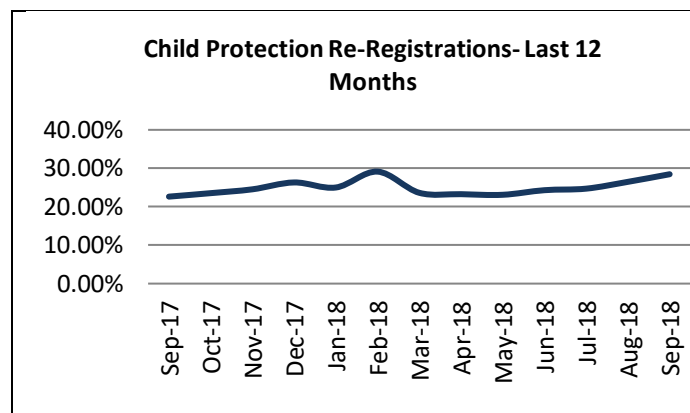
Measure / Metric	Result	Target	What's Good?	Status
The total number of children added to the Child Protection Register in the month.	16 (36)		Low is Good	
The total number of children removed from the Child Protection Register in the month.	49 (15)		Higher is Better	
The Percentage of Initial Conferences held in timescales during the month.	94.12% (92.50%)		High is Good	
The percentage of Initial Core Group Meetings held within timescales during the month.	100.00% (100.00%)		High is Good	
The percentage of visits to children on the Child Protection Register that were on time or not overdue.	72.38% (57.20%)	90%	High is Good	



What is working well?	What are we worried about?	What do we need to do?
<ol style="list-style-type: none"> High numbers of children removed from the child protection register. Much better compliance for the recording of statutory visits for children on the register. 	<ol style="list-style-type: none"> We still have some way to go to reach our desired level of CP visit recording compliance. 	<ol style="list-style-type: none"> Continue with improvements to recording CP visits on Paris.

Safeguarding – Reviews and Allocations

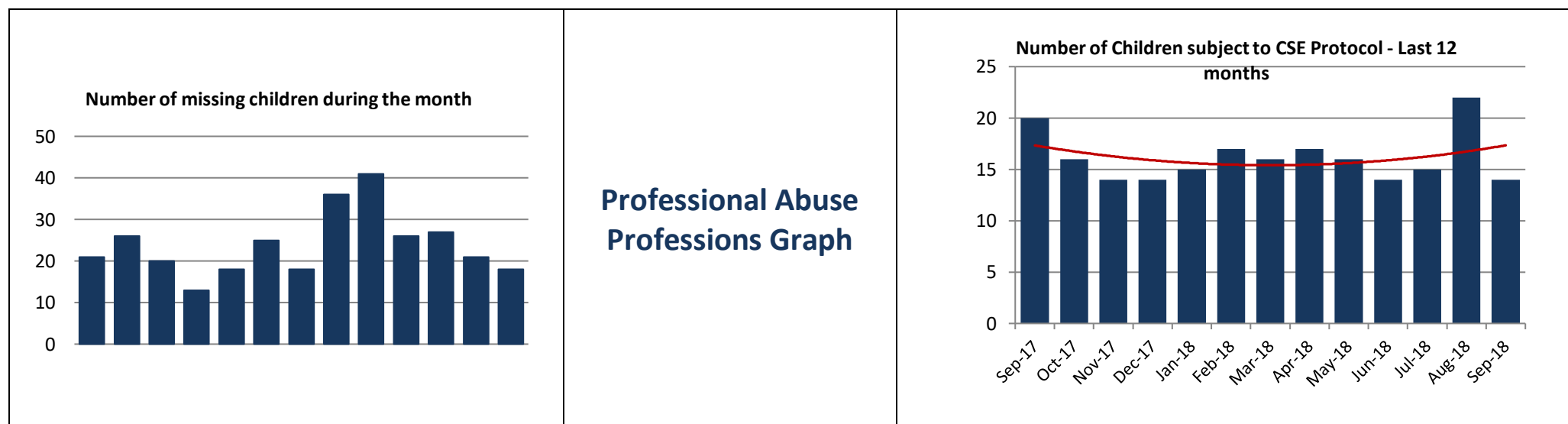
Measure / Metric	Result	Target	What's Good?	Status
The percentage of children on the Child Protection Register that have been registered previously .	28.45% (26.47%)	Less than 20%	Low is Good	
The length of time on the Child Protection Register for those children removed during the month.	188 days (134 days)	Range of 100-300	180-270 is Optimal	
The percentage of Review Conferences held on time during the month.	94.37% (100%)	98.5%	High is Good	
The percentage of children de-registered in the month who were de-registered at the first review :	47.92% (60%)	No Target Set	Ceiling?	
The percentage of children on the Child Protection Register Allocated to a qualified worker at the end of the month.	100% (100%)	100%	High is Good	



What is working well?	What are we worried about?	What do we need to do?
<ol style="list-style-type: none"> All children registered allocated to a qualified worker Length of time for children removed from the child protection register within target range. 	<ol style="list-style-type: none"> Emotional abuse is now the single biggest category of registration. The number of children who are de-registered at first review. Re-registrations of children on the child protection register. 	<ol style="list-style-type: none"> Continue analysis of factors that influence the registration of children on the child protection register, under which category they are registered and the length of time they remain on the register.

Safeguarding – CSE, Missing Children and Professional Abuse

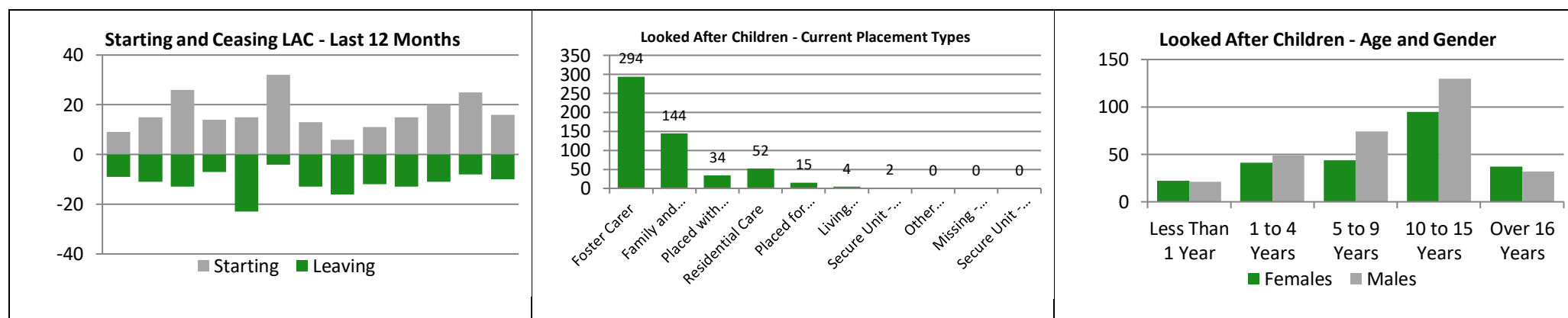
Measure / Metric	Result	Target	What's Good?	Status
The number of children managed under the protocol for Child Sexual Exploitation at the end of the month:	14 (22)	No Target Set	Lower is Better?	
The number of episodes of children going missing or absent without authority from home during the month:	35 (35)	No Target Set	Lower is Better	
The number of children that these episodes related to:	18 (21)	No Target Set	Lower is Better	
The number of Professional Abuse Meetings held during the month:		No Target Set	Low is Good	
The number of cases of Female Genital Mutilation referred to Child and Family Services during the month:		No Target Set	Low is Good	



What is working well?	What are we worried about?	What do we need to do?
1. The number of children managed under the protocol for child sexual exploitation is decreasing.		1. Commence reporting on professional abuse meetings from Q3 onwards.

Permanence – Looked After Children

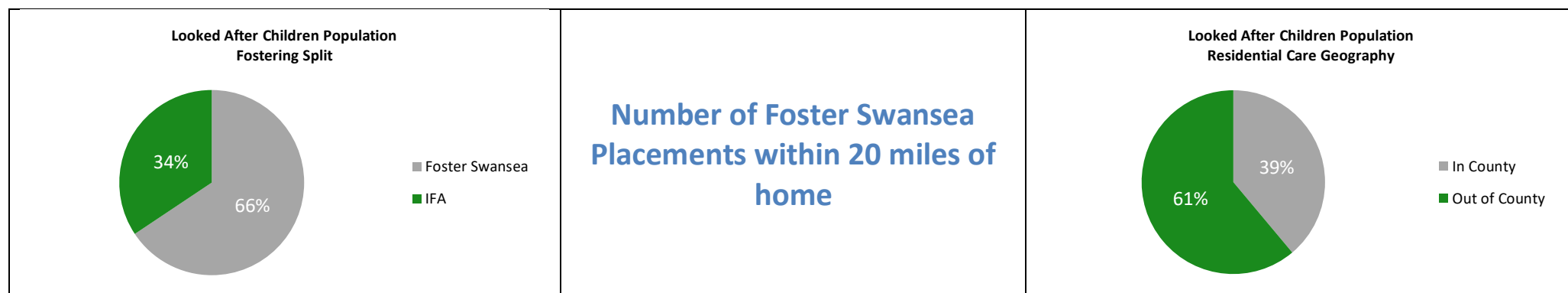
Measure / Metric	Result	Target	What's Good?	Status
The number of children becoming looked after during the month:	16 (25)	No Target Set	Low is Good	
The number of children ceasing to be looked after during the month:	10 (8)	No Target Set	Higher is Better	
The percentage of children becoming looked after during the month who had a completed Care and Support plan with 10 working days of becoming LAC:	100% (100%)	100%	High is Good	
The percentage of LAC Statutory Visits in the month that were completed or not overdue.	81.18% (74.30)	90%	High is Good	
The percentage of Looked After Children allocated to a qualified Social Worker:	99.63% (100%)	100%	High is Good	



What is working well?	What are we worried about?	What do we need to do?
<ol style="list-style-type: none"> Much better compliance with recording LAC statutory visits on Paris. Lower numbers of children entering care than in previous months. 	<ol style="list-style-type: none"> Re-allocation of two cases of looked after took longer than required (now resolved). 	<ol style="list-style-type: none"> Continue with work to improve contemporaneous recording of LAC statutory visits.

Permanence – Reviews and Placement Stability

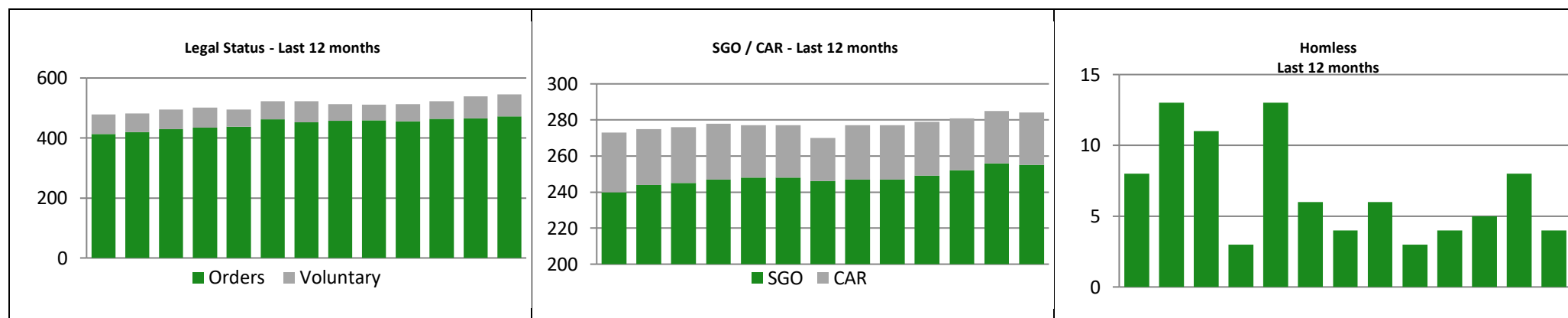
Measure / Metric	Result	Target	What's Good?	Status
The number of LAC Reviews Carried out during the month:	176 (95)	No Target Set	High is Good	
The number of LAC reviews that were completed within statutory timescales:	98.86% (100%)	95%	High is Good	
The percentage of 4 month LAC reviews which had a plan for permanence:	16, 100% (14, 100%)	No Target	High is Good	
The percentage of PEP's received within 20 school days of becoming looked after:	7, 33.33 (0, 0%)	No Target	High is Good	
The percentage of looked after children who have had three or more placements in the previous 12 months of being looked after:	12.29% (12.45%)	Between 5% and 8%	Lower is Better	
The number of children accommodated in Bed and Breakfast during the month:	0 (0)	Zero	Low is Good	



What is working well?	What are we worried about?	What do we need to do?
<ol style="list-style-type: none"> Plans children who require a plan for permanence in place. No children accommodated in B&B LAC reviews completed in timescales above target. 	<ol style="list-style-type: none"> PEP performance down to unacceptable levels. Number of children who have three or more placements outside target. 	<ol style="list-style-type: none"> Continue to monitor children who experience multiple placements.

Permanence – Leaving Care

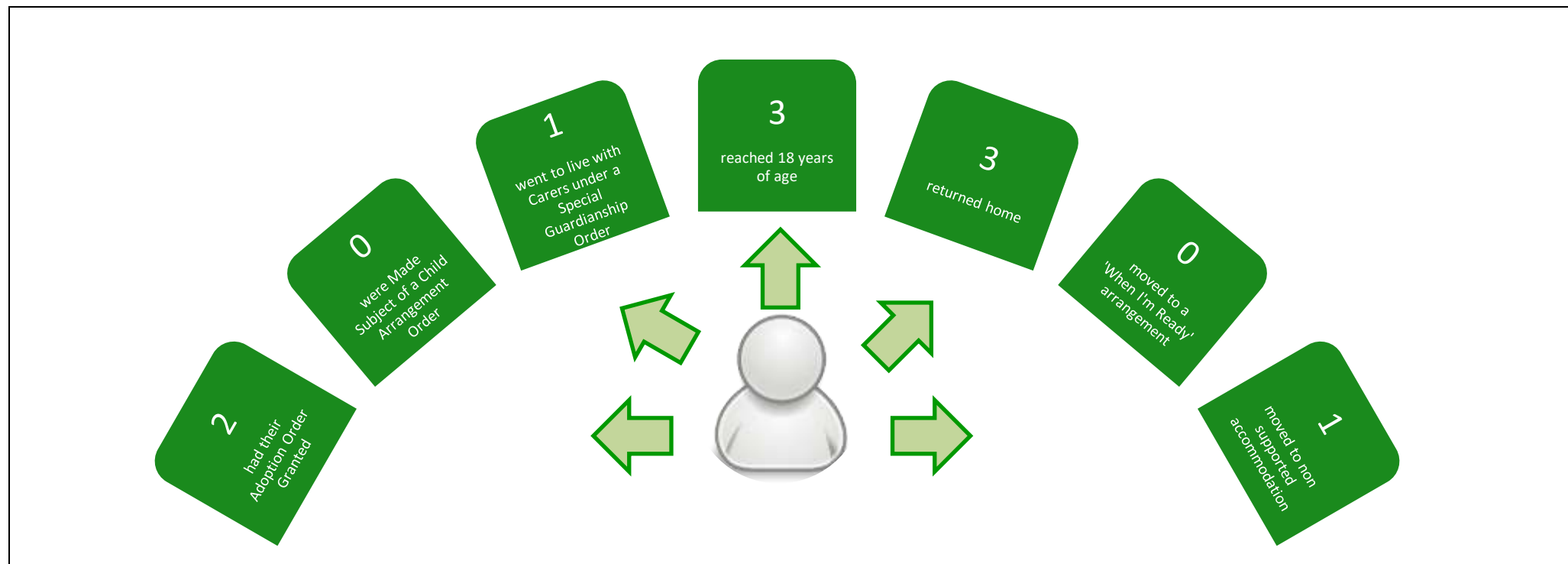
Measure / Metric	Result	Target	What's Good?	Status
The number of cases managed under Special Guardianship Orders and Child Arrangement Orders at the end of the month:	284 (285)	No Target Set	Range of 250-300	
The number/percentage of young people becoming category 2-4 during the month who have an up to date Pathway Plan:	3, 75% (9, 100%)	100%	High is Good	
The number/percentage of young people becoming category 2-4 during the month who have an allocated personal adviser:	4, 100% (9, 100%)	100%	High is Good	
The number of young people in category 2-4 at the end of the month who were in Education, Employment or Training 12 months after ceasing to be LAC:	2, 66.66% (4, 100%)	No Target Set	High is Good	
The number of young people presenting as homeless during the month:	4 (8)	No Target Set	Low is Good	



What is working well?	What are we worried about?	What do we need to do?
<ol style="list-style-type: none"> All necessary personal advisers allocated. Fewer young people presenting as homeless. 		<ol style="list-style-type: none"> Investigate the outcomes for those young people who present as homeless during the month.

Permanence – Destination upon Leaving Care

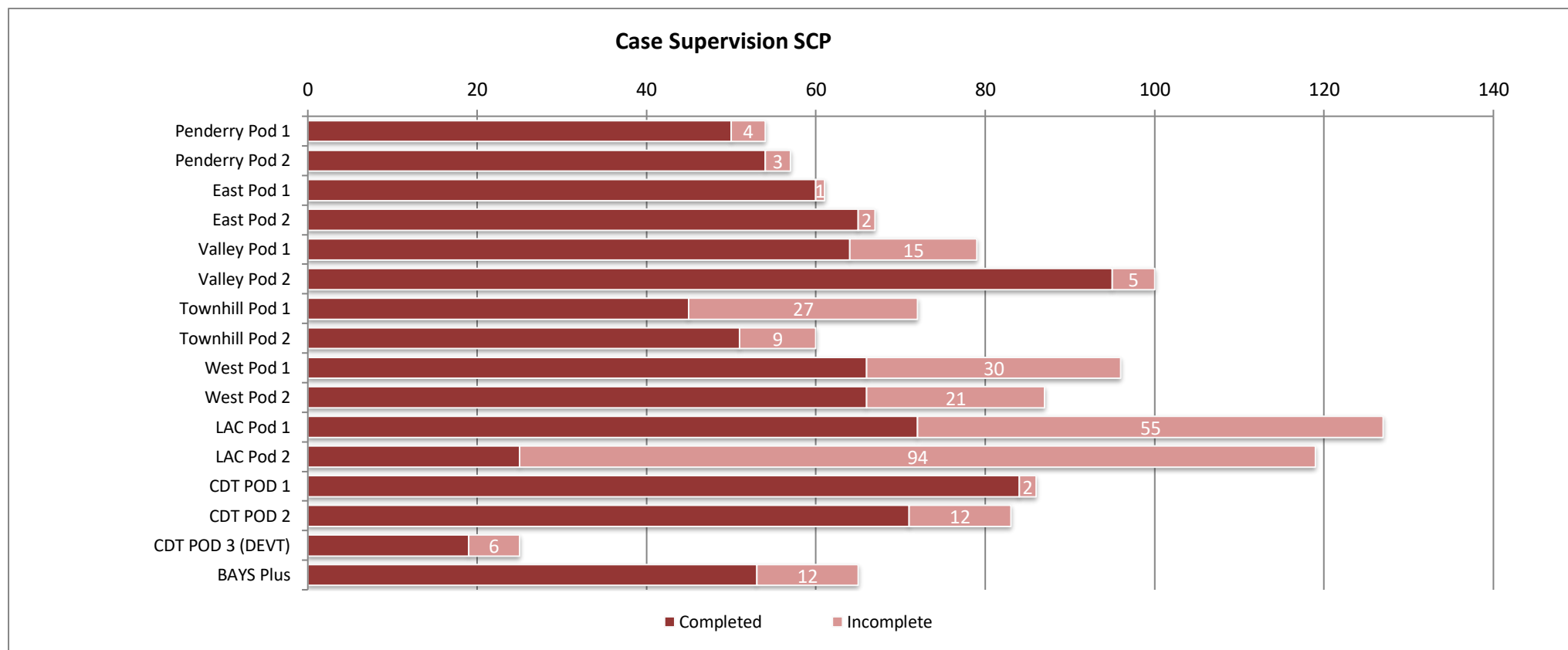
Measure / Metric	Result	Target	What's Good?	Status
The percentage of children supported to live at home at the end of the month:	66.42% (66.56%)	No Target Set		
The percentage of children returning home from care during the month:	4, 40.00% (2, 25%)	?	High is Good	



What is working well?	What are we worried about?	What do we need to do?
1. Predominantly good leaving care outcomes for children and young people.		1. Ensure continuity for those children who reach 18 to make certain that they take up the offer of support from BAYS+.

Quality – Case and Personal Supervision

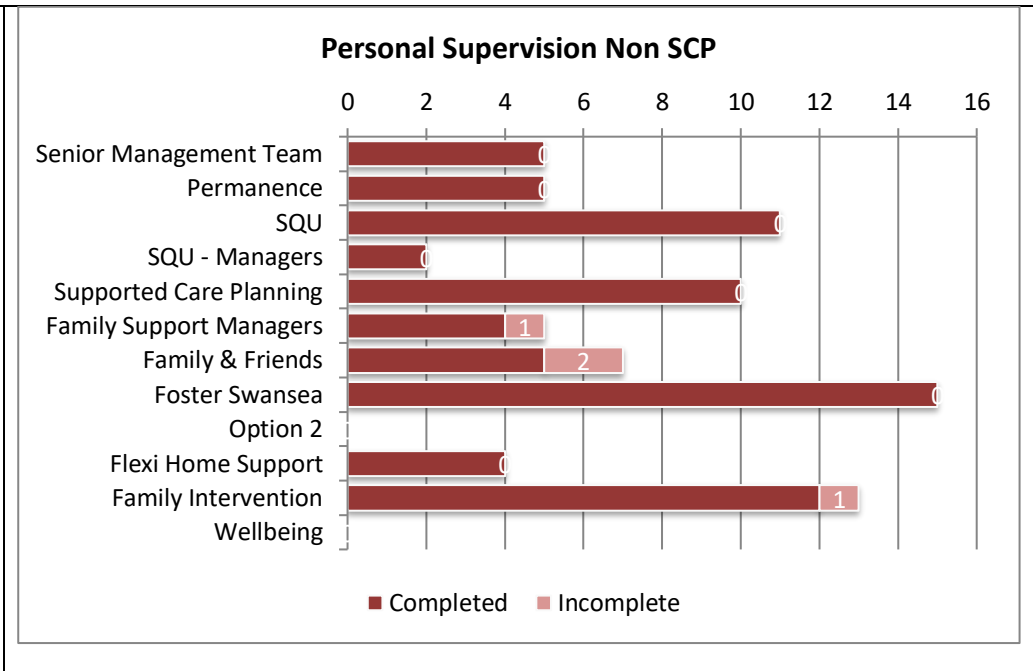
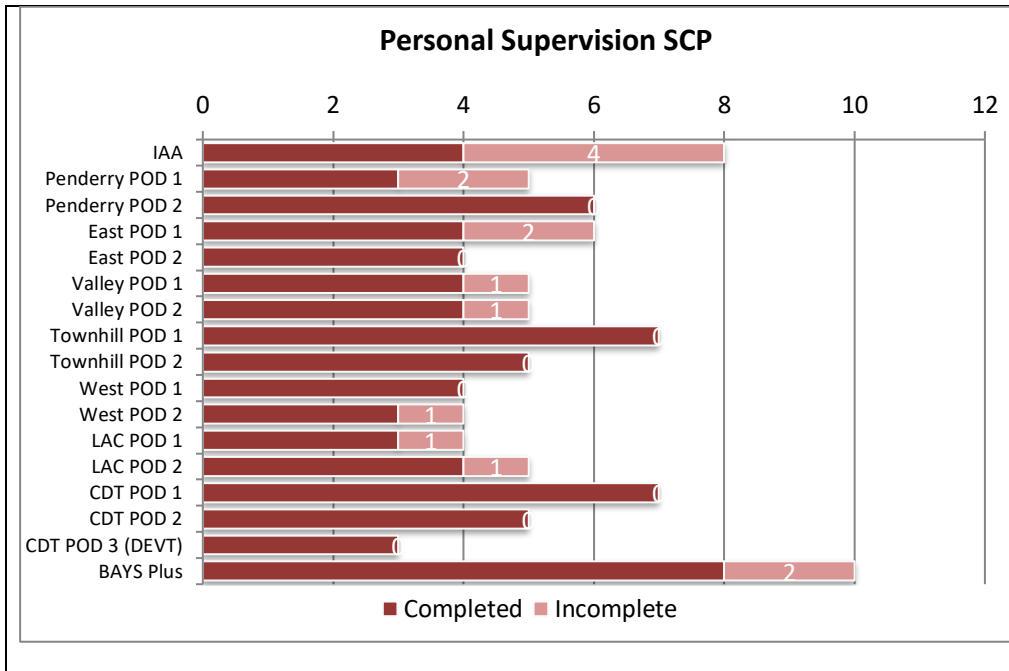
Measure / Metric	Result	Target	What's Good?	Status
The percentage of Personal Supervision sessions that took place within prescribed timescales				
The percentage of children in need of Care and Support whose cases were reviewed during the month:				



What is working well?	What are we worried about?	What do we need to do?
1. Some excellent levels of case supervision within the Pods.	1. The LAC/West Hub are struggling to maintain acceptable levels of case supervision.	1. Reasons behind low levels of performance from the LAC/West Hub to be investigated and resolved.

Quality – Case and Personal Supervision

Measure / Metric	Result	Target	What's Good?	Status
The percentage of Personal Supervision sessions that took place within prescribed timescales				
The percentage of children in need of Care and Support whose cases were reviewed during the month:				



What is working well?	What are we worried about?	What do we need to do?
1. Very good overall levels of staff supervision		

Quality – Signs of Safety Metrics

Measure / Metric	Result	Target	What's Good?	Status
The percentage of Words and Pictures in place within 5 working days from the time of placement:			High is Good	
The percentage of Assessments that have a Three Houses attached:			High is Good	
The percentage of LAC placements and Child Protection conferences where a Family Network Meeting has taken place prior to the event:			High is Good	
The percentage of Case Conferences where there is evidence of a child friendly explanation of the Safety Plan:			High is Good	

--	--	--

What is working well?	What are we worried about?	What do we need to do?
		1. Commence reporting from Q4

Notes

A large, empty rectangular box with a thin black border, occupying most of the page. It is intended for the user to write notes.